

THE UNIVERSITY OF MISSISSIPPI

NEW FACULTY

2020-2021



From the Chancellor

It's a pleasure to welcome the newest members of our talented and dedicated faculty! We're grateful for the energy, expertise and excellence you'll contribute to the University of Mississippi. Although the fall semester will be marked by the continuing impact of the pandemic, you'll discover quickly that we combine a national profile for academics and research with a tremendously caring and collegial living, learning and working environment. We look forward to how you will deliver life-changing educational opportunities, advance your career, strengthen our institution and improve lives and society in the process. We're here to ensure a smooth and successful transition. Please reach out to my office if we can help or if you'd like to schedule a time simply to visit or discuss any opportunity at our university. We're so glad you've joined our campus community.



Glenn F. Boyce

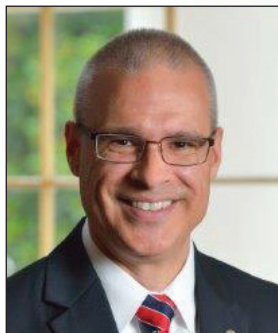
Sincerely,

A handwritten signature in black ink that reads "Glenn F. Boyce". The signature is fluid and cursive, with the first letters of the first and last names being capitalized and prominent.

Glenn F. Boyce, Chancellor

From the Provost

Welcome to the University of Mississippi. We are glad that you are joining our vibrant community of scholars that is committed to educating and serving the citizens of our state, nation, and world. The work you do here will be incredibly meaningful. Quite simply, it changes lives. We are dedicated to fostering an atmosphere that unleashes your creativity. The University of Mississippi is a better place when you succeed. We are committed to nurturing a culture that respects the dignity of every person. This is fundamental to our community's values and is critical to fairness, civility, integrity, academic honesty, and academic freedom. While we face challenges and modifications to our operations due to the pandemic, we are still pursuing our mission to educate, discover, create, and serve. We are glad you are here and look forward to the great things you will accomplish as members of our community.



Noel E. Wilkin

Sincerely,

A handwritten signature in black ink that reads "Noel E. Wilkin". The signature is fluid and cursive, with the first letters of the first and last names being capitalized and prominent.

Noel E. Wilkin, Provost



College of *Liberal Arts*

KAREN BARBER

Art and Art History

Visiting Assistant Professor of Art History



Dr. Barber received her Ph.D. from the Graduate Center, City University of New York. She specializes in the history of photography and 20th-century art.

LAUREN BONE NOBLE

Theatre and Film

Assistant Professor of Movement for the Actor



Ms. Bone Noble received her MFA from the National Theatre Conservatory. She specializes in physical theatre and movement for the actor.

HSIN-HUI CHEN

Modern Languages

Chinese Flagship Instructor



Ms. Chen received her M.A. from National Chung Cheng University. She specializes in Cognitive Linguistics and Teaching Chinese as a Second Language.

JAYE SARAH DAVIDSON

Theatre and Film

Assistant Professor of Film Production



Ms. Davidson received her MFA from Florida State University. She is currently working as a director and producer on short narrative films.

ANDREW HALES

Psychology

Assistant Professor of Psychology



Dr. Hales received his Ph.D. from Purdue University. He specializes in the psychology of social ostracism.

LAURA KATHERINE HUBER

Political Science

Assistant Professor of Political Science

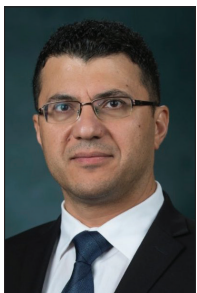


Dr. Huber received her Ph.D. from Emory University. She specializes in conflict and security studies with a focus on security sector reform, peacekeeping, and gender.

CHARLES JOUKHADAR

Modern Languages

Assistant Professor of Arabic



Dr. Joukhadar received his Ph.D. from the University of Arizona. He specializes in Arabic sociolinguistics and teaching Arabic as a foreign language.

SUSAN NICHOLAS

Writing & Rhetoric

Instructor

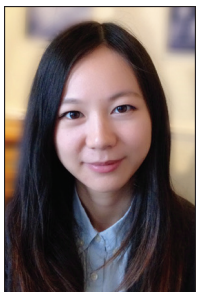


Ms. Nicholas received her M.A. from the University of Mississippi. Her research interests include writing as a tool to enhance critical thinking in the first-year seminar.

YUYUN LEI

Modern Languages

Chinese Flagship Instructor



Ms. Lei received her M.A. from Carnegie Mellon University. She specializes in language assessment and Chinese language acquisition and pedagogy.

MARY ANN PARKER

Writing & Rhetoric

Instructor

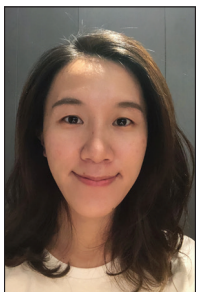


Dr. Parker received her Ph.D. from the University of Mississippi. She specializes in Secondary English Education.

MENG-CHIEH LIN

Modern Languages

Chinese Flagship Instructor

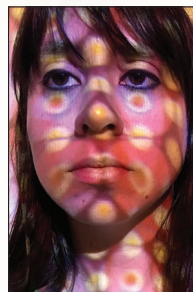


Ms. Lin received her M.S. from National Chengchi University. She specializes in Teaching Chinese as a Second Language.

VALERIE GUINN POLGAR

Art and History

Visiting Assistant Professor of Art



Ms. Polgar received her MFA from the School of Visual Arts. She is an interdisciplinary new media artist who utilizes video, animation, coding, and physical computing to create digital and interactive works.

GRACE RIVERA

Psychology

Assistant Professor of Psychology



Dr. Rivera received her Ph.D. from Texas A&M University. She specializes in culturally-informed lay theories about selves and systems and their psychological and interpersonal consequences.

EDEN TANNER

Chemistry and Biochemistry

Assistant Professor of Chemistry and Biochemistry

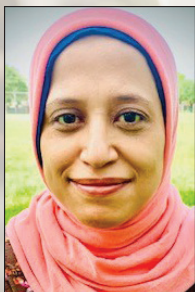


Dr. Tanner received her DPhil from the University of Oxford. She specializes in the application of physical chemistry tools to solve biomedical problems, particularly using ionic liquids in nanoparticle drug delivery.

ASMAA SHEHATA

Modern Languages

Assistant Professor of Arabic



Dr. Shehata received her Ph.D. from the University of Utah. Her research interests include second language acquisition in general, with particular focus on second language phonology and word recognition.

ZACHARY VEREB

Public Policy Leadership

Visiting Assistant Professor of Public Policy Leadership



Dr. Vereb received his Ph.D. from the University of South Florida. His research focuses on the relevance and application of Kant's philosophy for environmental ethics and climate change, including its political and ethical dimensions.

CODY STOCKSTILL

Theatre & Film

Assistant Professor of Scenic Design



Mr. Stockstill received his MFA from the University of Southern Mississippi. He specializes in scenic and environmental design for theatre.



University *Libraries*



School of *Law*

ADAM CLEMONS

Research and Instruction Services

Research and Instruction Librarian and Assistant Professor



Mr. Clemons received his MLS from Indiana University. He is the subject specialist for History, Political Science, Journalism, African American Studies, International Studies, Public Policy Leadership, and Military Science & Leadership.

YVETTE T. BUTLER

Law

Assistant Professor of Law



Professor Butler received her Juris Doctorate from The George Washington University Law School. Her research interests center around race, sexuality, technology, and civil rights and liberties.

ABIGAIL NORRIS

Metadata and Digital Initiatives

Digital initiatives Librarian and Assistant Professor



Ms. Norris received her M.S.I.S. from The University of Texas at Austin. She specializes in digital archiving and the digital humanities.



School of *Engineering*

MATTEO D'ALLESSIO

Civil Engineering

Assistant Professor of Civil Engineering



Dr. D'Allessio received his Ph.D. from the University of Hawai'i at Mano. His research interests include fate and transport of chemicals of environmental concern, natural filtration, low-cost water treatment technologies, water reuse, and citizen science.

AARON JOY

Mechanical Engineering

Assistant Professor of Mechanical Engineering



Dr. Joy received his Ph.D. from the University of Kansas. His research interests include classical and non-classical continuum mechanics, fluid-solid interactions, computational mathematics, and material damage modeling.

WEN WU

Mechanical Engineering

Assistant Professor of Mechanical Engineering



Dr. Wu received his Ph.D. from Queen's University in Kingston, Canada. His research interests range from understanding and modelling turbulent flows to complexity in fluid mechanics in general.

BARRY MULDRY

Electrical and Computer Engineering

Assistant Professor of Electrical and Computer Engineering



Dr. Muldrey received his Ph.D. from the Georgia Institute of Technology. His research interests include the reliability, safety, and testing of electronic and computer systems.

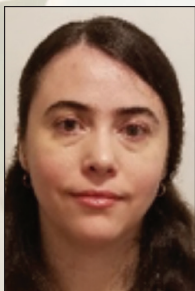


School of Education

ANA PAVEL

Biomedical Engineering

Assistant Professor of Biomedical Engineering

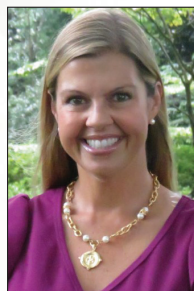


Dr. Pavel received her Ph.D. in Bioinformatics from Boston University and a Ph.D. in Systems Engineering from Politehnica University of Bucharest. Her research interests include systems and computational biology, machine learning, big data analysis, and drug discovery for autoimmune diseases and cancer.

MACEY LYND EDMONDSON

Higher Education

Clinical Assistant Professor of Higher Education and Program Coordinator

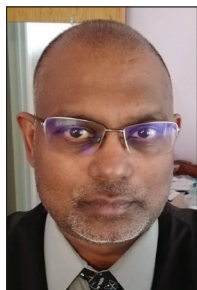


Dr. Edmondson received her Ph.D. from the University of Mississippi and J.D. from the School of Law. Her background is in law, student affairs, and admissions. She co-founded the National Association for Law Student Affairs Professionals.

ANGUS SHIVA MUNGAL

Leadership and Counselor Education

Assistant Professor of Educational Leadership



Dr. Mungal received his Ph.D. from New York University. He specializes in qualitative research methodologies, educational policy, and issues surrounding advocacy and diversity. His research focuses on marketization in the field of education, alternative preparation programs, and critical discourse.

SALLY BOOTH QUONG

Teacher Education

Clinical Assistant Professor of Secondary Education



Dr. Quong received her Ph.D. from the University of Mississippi. She is a National Board-Certified Teacher and specializes in the integration of English Language Acquisition (ELA) and social studies in the secondary classroom.



School of *Pharmacy*

KAUSTUV BHATTACHARYA

Research Institute of Pharmaceutical Sciences, Center for Pharmaceutical Marketing and Management

Research Assistant Professor in the Research Institute of Pharmaceutical Sciences and Assistant Professor of Pharmacy Administration

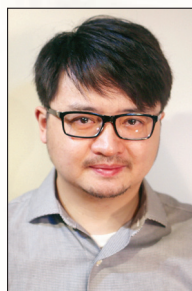


Dr. Bhattacharya received his Ph.D. from the University of Mississippi. He specializes in health outcomes research with an emphasis in cancer survivorship, end-of-life care, and patient-centered outcomes, pharmacoepidemiologic and pharmaco-economic research, and quality of care measurement.

JING LI

BioMolecular Sciences

Assistant Professor of Medicinal Chemistry and Research Assistant Professor in the Research Institute of Pharmaceutical Sciences



Dr. Li received his Ph.D. from the University of Illinois at Urbana-Champaign. He specializes in computational chemistry and biophysics.

ALEX MILLS

Pharmacy Practice

Assistant Professor of Pharmacy Practice



Dr. Mills received his PharmD from Purdue University College of Pharmacy. He specializes in primary care in persons living with HIV and those in the LGBTQ community.



School of *Business Administration*

EMILY TSCHUMPER

Pharmacy Practice

Clinical Assistant Professor of Pharmacy Practice



Dr. Tschumper received her PharmD from the University of Mississippi. She is a board certified pharmacotherapy specialist and specializes in Emergency Medicine.

KRISTIN CULLEN-LESTER

Management

Assistant Professor of Management



Dr. Cullen-Lester received her Ph.D. from Auburn University. She specializes in organizational networks, collective leadership, and the implementation of strategic, large-scale change.

MATTHEW HENRIKKSON

Finance

Assistant Professor of Finance



Dr. Henriksson received his Ph.D. from the University of South Florida. His research focuses on the behaviors of financial market participants.

GARY HUNTER

Marketing

Founders Chair and Associate Professor of Marketing



Dr. Hunter received his Ph.D. from the University of North Carolina. His research centers on sales technology and sales force analytics.

KEITH MORRIS

Management

Adjunct Instructor of Management



Mr. Morris received his MBA from Belhaven College and a BSBA from the University of Southern Mississippi. He has worked with Royal Dutch Shell affiliates for approximately 37 years in contracts, negotiation, and new business activities both domestically and internationally.

HOUSTON LESTER

Management

Instructor of Management

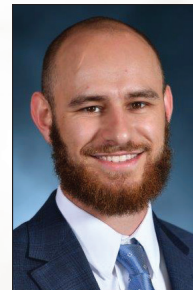


Dr. Lester received his Ph.D. from the University of Nebraska – Lincoln. He specializes in the improvement of statistical methods for organizational research.

MATT WEAVER

Management

Adjunct Instructor of Management



Mr. Weaver received his M.A. in Modern Languages and MBA from the University of Mississippi. He currently serves as an academic advisor and instructor in the Center for Student Success and First-Year Experience. His interests include entrepreneurship, business communication, and ethics and leadership.

JAKE MCNICHOLS

Management

Adjunct Instructor of Management



Mr. McNichols received his MBA from Bethel University. He specializes in business operations for higher education and is currently at the University of Mississippi as the Manager of Summer, Winter and Online Sessions.



Sally McDonnell Barksdale *Honors College*

KEN THOMAS

Sally McDonnell Barksdale Honors College
Associate Dean for Capstone



Dr. Thomas received his Ph.D. in Civil Engineering from the University of South Florida concentrating in environmental and water resource sustainability. He will coordinate and direct the Capstone experience for the third/fourth year experience of Honors College students as they prepare for the Honors thesis/practicum.



School of *Applied Sciences*

HANNAH ALLEN

Health, Exercise Science, and Recreation Management
Assistant Professor of Health, Exercise Science, and Recreation Management



Dr. Allen received her Ph.D. in Behavioral and Community Health from the University of Maryland School of Public Health. Her research focuses on the relationship between alcohol use and achievement among young adults.

RACHEL LEIGH GREENSPAN

Criminal Justice and Legal Studies

Assistant Professor of Criminal Justice and Legal Studies



Dr. Greenspan received her undergraduate degrees from the University of Florida and her Ph.D. from the University of California, Irvine. She is a social psychologist studying topics at the intersection of psychology and the legal system. Her research focuses on eyewitness identifications and the development and persistence of false memories.

ABIGAIL S. NOVAK

Criminal Justice and Legal Studies

Assistant Professor of Criminal Justice and Legal Studies



Dr. Novak received her Ph.D. from the University of Florida. Her research examines systems and delinquency.

MARQUITA S. SMITH

School of Journalism and New Media

*Assistant Dean for Graduate Programs and Associate
Professor of Communication*



Dr. Smith received her Ed.D. from the University of Arkansas. Her research interests focus on media development, public health communications, and topics on diversity, equity, and inclusion.

RICK HOLLANDER

Center for Manufacturing Excellence

Instructor



Mr. Hollander received his BS in Industrial Engineering and MBA from the University of Tennessee. He has over 25 years' experience working in operations and supply chain management within industry.

DENISE THEOBALD ROBERTS

Center for Manufacturing Excellence

Instructional Associate Professor



Dr. Theobald Roberts received her Ph.D. in Engineering Science with emphasis in Materials Science and Engineering from the University of Mississippi. She specializes in the structure, processing, and characterization of materials, the optimization of material performance, and selection for engineering design.

SHAIO ZERBA

Center for Intelligence and Security Studies

*Director of the Center for Intelligence and Security Studies,
Instructional Assistant Professor*



Dr. Zerba received her Ph.D. from Arizona State University. She specializes in security studies, with a focus on comparative civil-military relations, Chinese foreign policy, and Asian regional security.

The background of the page features a soft-focus photograph of white flowers, likely magnolias, with their branches and leaves. The image is overlaid with a semi-transparent white layer to ensure the text is legible.

The Creed

of

The University of Mississippi

The University of Mississippi is a community of learning dedicated to nurturing excellence in intellectual inquiry and personal character in an open and diverse environment. As a voluntary member of this community:

I believe in respect for the dignity of each person.

I believe in fairness and civility.

I believe in personal and professional integrity.

I believe in academic honesty.

I believe in academic freedom.

I believe in good stewardship of our resources.

I pledge to uphold these values and encourage others to follow my example.

