

THE UNIVERSITY OF MISSISSIPPI

NEW FACULTY

2021-2022



From the Chancellor

Welcome to the University of Mississippi as the newest members of our talented and dedicated faculty. I'm grateful you're here and excited about all that you will contribute to our community of scholars. Your knowledge, insights, and talents form the foundation of our mission, and we're committed to helping you grow as a scholar, researcher, creator, and member of the university community.

You will soon discover that our national profile for academics and research is built upon a supportive, respectful working environment that promotes collective success. Our Academic Affairs leaders, your department chairs, and your colleagues will support you as you provide life-changing educational opportunities for our students, advance your career, strengthen our institution, and improve lives and society in the process.

It's a great privilege to serve as your chancellor, and I want you to know that I'm available to you. Please reach out to my office if you have any questions or if you'd like to schedule a time to visit or discuss opportunities. Thank you for joining our campus community — we're excited that you're now an important part of the story of the University of Mississippi.

Sincerely,



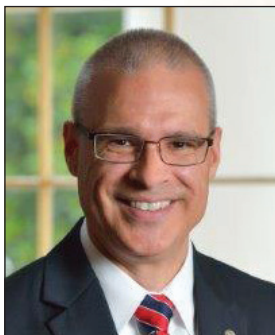
Glenn F. Boyce, Chancellor



Glenn F. Boyce

From the Provost

Welcome to the University of Mississippi. We are glad that you are joining our vibrant community of scholars that is committed to educating and serving the citizens of our state, nation, and world. The work you do here will be incredibly meaningful. Quite simply, it changes lives. We are dedicated to fostering an atmosphere that unleashes your creativity. The University of Mississippi is a better place when you succeed. We are committed to nurturing a culture that respects the dignity of every person. This is fundamental to our community's values and is critical to fairness, civility, integrity, academic honesty, and academic freedom. While we face challenges and modifications to our operations due to the pandemic, we are still pursuing our mission to educate, discover, create, and serve. We are glad you are here and look forward to the great things you will accomplish as members of our community.



Noel E. Wilkin

Sincerely,



Noel E. Wilkin, Provost



College of *Liberal Arts*

ZACHARY ADAMZ

Sociology and Anthropology

*Croft Visiting Assistant Professor of Anthropology
and Korean Studies*

Dr. Adamz received his Ph.D. from the University of Texas at Austin. He specializes in modern Korean history, diasporas, and geographic theory.

ÍSIS DA COSTA ARANTES

Biology

Instructional Assistant Professor of Biology



Dr. Arantes received her Ph.D. at the University of Mississippi. She specializes in ecology and evolution of neotropical savanna amphibians.

KRISTIN AUSTIN

Psychology

*Clinical Assistant Professor and Director of the Psychological
Services Center*



Dr. Austin received her Ph.D. from Virginia Polytechnic Institute and State University (Virginia Tech). She specializes in neurodevelopmental disorders (ADHD, ASD) and executive functioning as well as in the supervision of psychological assessment and therapy.

JEFFERY BEDNARK

Psychology

Adjunct Instructional Assistant Professor of Psychology



Dr. Bednark received his Ph.D. from the University of Otago in New Zealand. He specializes in the neuroscience of learning and agency.

ANNALISE V. CAUDLE

Theatre and Film

Instructional Assistant Professor of Lighting Design



Ms. Caudle received her M.F.A. from Texas State University. She is a lighting designer who has a passion for clean lines, precision, comfort, and collaboration.

ROB DEVRIES

Biology

Instructional Assistant Professor of Biology



Dr. DeVries received his Ph.D. from Mississippi State University. He specializes in fisheries and fisheries management.

TANIA FERRONATO

Modern Languages
Instructor of Italian



Ms. Ferronato received her M.A. from the University of Padua, Italy. She specializes in Italian and English linguistics. She was a Fulbright Scholar for the academic year 2019/20.

KERRI J. HAME

Classics
Adjunct Instructor



Dr. Hame received her Ph.D. from Bryn Mawr College. She specializes in ancient Greek and Latin languages, Greek and Roman literature, material culture, and religion.

ROBERT FLEEGLER

History
Associate Professor of History



Dr. Fleegler received his Ph.D. from Brown University. He specializes in 20th century United States history with an emphasis on American politics.

BRYCE HEESACKER

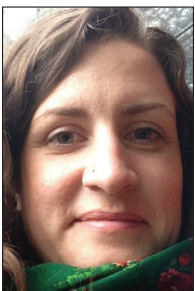
Art & Art History
Assistant Professor of Art, Digital Media



Mr. Heesacker received his M.F.A. in Expanded Media from the University of Kansas. He specializes in video, sound, installation, interactive media, and creative coding.

EMILY LORD FRANSEE

History
Croft Assistant Professor in the History of 20th Century France in Global Context



Dr. Fransee received her Ph.D. from the University of Chicago. She specializes in modern European and global history, focusing in particular on colonialism, gender, and race in France and the francophone world.

JACOB JUSTICE

Writing and Rhetoric
Assistant Professor and Director of Forensics



Dr. Justice received his Ph.D. from the University of Kansas. He specializes in rhetorical criticism, political communication, argumentation theory, and debate.

ELIZABETH (ELLIE) MOORE

Writing and Rhetoric

Lecturer and Speaking Center Director



Dr. Moore received her M.A. in Communication Studies from New Mexico State University and her Ed.D. from the University of Mississippi. She specializes in political communication and transfer student success.

JESSICA OMOREGIE

Sociology and Anthropology

Visiting Assistant Professor of Sociology



Dr. Omoregie received her Ph.D. in Applied Demography from the University of Texas at San Antonio. She specializes in demographic analysis and health disparities.

MEL MORSE

Music

Instructional Assistant Professor and Assistant Director of Bands



Mr. Morse received his Bachelor of Music in Music Education and Master of Music in Music Education from the University of Mississippi. He specializes in instrumental music education.

ADRIENNE PARK

Music

Assistant Professor of Collaborative Piano



Ms. Park received her Master of Music in Piano Performance from the University of British Columbia. She specializes in collaborative piano and orchestral piano performance.

MICHEL OHMER

Biology

Assistant Professor



Dr. Ohmer received her Ph.D. from the University of Queensland in Australia. She specializes in global change ecophysiology and disease ecology, with a focus on amphibians and their conservation.

CHRISTIE ROTARIUS

Theatre & Film

Visiting Assistant Professor of Musical Theatre



Ms. Rotarius received her Master of Music in Musical Theatre Vocal Performance and Advanced Certificate in Vocal Pedagogy from NYU Steinhardt. She specializes in vocal health and rehab and musical theatre vocal performance.

BRIGITTE SALAMI

Art & Art History

Assistant Professor of Art History



Dr. Salami received her Ph.D. from the University of Iowa. She specializes in the art history of the African continent, its diaspora, and postcolonial theory.

KURT D. STREETER

Psychology

Instructor in Psychology



Dr. Streeter received his Ph.D. from the University of Mississippi. He is a cognitive scientist and lecturer with a variety of research interests including non-conscious learning, perceptions of naturalness and the natural world, as well as broader interests related to philosophy of mind and science.

STEVEN SCHAAF

Political Science

Croft Assistant Professor in the Politics of the Middle East



Dr. Schaaf received his Ph.D. from the George Washington University. He specializes in Middle East politics, authoritarianism, and comparative judicial politics.

LINDSAY RAE TAYLOR

Theatre & Film

Assistant Professor of Performance



Ms. Taylor received her B.F.A. from the Tisch School of the Arts at New York University and her M.F.A. from the University of South Carolina. She specializes in acting and directing for the stage.

TALYA PERI SLAW

Writing and Rhetoric

Instructor of Speech



Ms. Slaw received her M.A. from the University of Kansas. She specializes in public memory of World War II and teaches public speaking.

SHUYU YEH

Modern Languages

Instructor of Chinese



Ms. Yeh received her M.A. from the National Taiwan Normal University. She specializes in teaching Chinese as a second language.

CONG ZHOU

Mathematics

Visiting Assistant Professor of Mathematics



Dr. Zhou received her Ph.D. from Indiana University Bloomington. She specializes in free probability and random matrix theory.



School of Engineering

SAMRAT CHOUDHURY

Mechanical Engineering

Associate Professor of Mechanical Engineering



Dr. Choudhury received his Ph.D. in Materials Science and Engineering from the Pennsylvania State University. His expertise is in computational design of materials for energy applications.



School of Law

LINDA JELLUM

Law

Visiting Professor of Law



Professor Jellum received her J.D. from Cornell Law School and her B.A. from Cornell University. She specializes in tax and administrative law, with a special emphasis on statutory interpretation.

MEYSAM HEYDARI GHARAHCHESHMEH

Mechanical Engineering

Assistant Professor of Mechanical Engineering



Dr. Gharahcheshmeh received his Ph.D. from the University of Houston and conducted his Postdoctoral at the Massachusetts Institute of Technology (MIT). He specializes in texture and nanostructure of advanced functional materials and advanced conductors for energy and biocompatible device applications.

AMIRARSALAN MOLAN

Civil Engineering

Assistant Professor of Civil Engineering



Dr. Molan received his Ph.D. in Civil Engineering from Wayne State University. He specializes in traffic operation analysis, alternative intersections, highway safety, traffic simulation modeling, and pedestrian and bicycle safety.

NATHAN E. MURRAY

Chemical Engineering

Associate Professor of Chemical Engineering



Dr. Murray received his Ph.D. from the University of Mississippi. He specializes in turbulence dynamics in complex systems and is an expert in the experimental study of unsteady flows and acoustics. His teaching involves topics in fluid/thermal transport sciences. He also leads the High-Speed Aeroacoustics Group in the NCPA and is the Director for Mississippi's NASA Space Grant Consortium.

NICOLE ROBERSON

Teacher Education

Instructor and Director of MS Public School Consortium for Educational Access



Ms. Roberson received her B.A. and M.Ed. degrees from the University of Mississippi and has 20 years of high school science teaching experience.

BYRON S. VILLACORTA

Chemical Engineering

Assistant Professor of Chemical Engineering



Dr. Villacorta received his Ph.D. from Clemson University. He specializes in advanced materials processing, with a particular focus on polymer formulation, functional nanocomposites, biocomposites, and composite materials for harsh environments.



School of Pharmacy

JOSEPH DIKUN

Pharmacy Administration

Instructional Assistant Professor



Dr. Dikun received his Pharm.D. from Northeast Ohio Medical University. His interests include community pharmacy practice advancement, pharmacy management, student leadership development, and qualitative research methods.



School of Education

RICHARD JOWERS

Teacher Education

Clinical Assistant Professor of Health and Physical Education



Mr. Jowers is an HBCU alumnus completing his Ph.D. from the University of Alabama. His background is in sports pedagogy and coaching with a foundation in race and gender.

NATALIE MONTGOMERY

Pharmacy Practice

Clinical Assistant Professor of Pharmacy Practice



Dr. Montgomery received her Pharm.D. from the University of Mississippi. She specializes in adult medicine.



School of *Business Administration*

JOSIE BURKS

Management

Instructional Assistant Professor of Management



Dr. Burks received her Ph.D. from the University of Alabama. Her research interests explore constructs, behavioral mechanisms, and persuasive underpinnings of entrepreneurial venture pitches, support for entrepreneurial innovation and new venture development, as well as entrepreneurial education research regarding venture pitches, mindset, and coachability.

DEAN DOUGLAS

Marketing

Adjunct Instructor of Marketing



Mr. Douglas received his B.B.A. from the University of Mississippi. He has been a senior executive at Motorola and CenturyLink. Also, he has been the CEO of four multinational companies.

LEE INGRAM

Management

Adjunct Instructor of Management



Mr. Ingram received his M.Accy from the University of Mississippi. Instead of pursuing a corporate career, he formed a virtual tutoring business which now serves students across the country.

ALLONA MURRY

Management

Instructional Assistant Professor of Management



Dr. Murry received her Ph.D. from the University of South Alabama. Her research interests include leadership, voice, psychological safety, social workplace courage, and performance.

KEXIN XIANG

Marketing

Instructional Assistant Professor of Marketing



Dr. Xiang received her Ph.D. in Marketing from the University of Mississippi, M.S. in Information Management, Certificate of Advanced Study in Data Science from Syracuse University, and a B.S. degree in Business from Indiana University. Her research interest is empirical marketing strategy with a particular focus on marketing-finance interface.



School of *Applied Sciences*

CORBIT FRANKS

School of Applied Sciences-Master of Science in Athletic Training

*Assistant Professor and Clinical Education Coordinator of
Athletic Training*



Dr. Franks received his Ph.D. from the University of Mississippi. He is a Certified Athletic Trainer and Corrective Exercise Specialist. He specializes in sports performance and injury prevention.

ELLEN OSSORIO

Nutrition and Hospitality Management

Instructor, Director of Didactic Program in Dietetics



Ms. Ossorio received her Masters of Science from the University of Mississippi in Food and Nutrition Services. She comes back to the University after working as a Clinical Registered Dietitian at LeBonheur Children's Hospital in Memphis, Tennessee.

HEATHER LANDRY SHIRLEY

School of Applied Sciences-Master of Science in Athletic Training

*Assistant Professor and Program Director of Athletic
Training, Executive Associate Director of the Center
for Health & Sports Performance*



Dr. Shirley received her Ph.D. from the University of Mississippi. She is both a Board Certified and Licensed Athletic Trainer and Massage Therapist. She specializes in athletic training education and injury prevention with a focus on sport-related concussion/MTBI in both collegiate and youth sports.

VICTORIA ZIGMONT

Health, Exercise Science, and Recreation Management

*Assistant Professor of Health, Exercise Science, and
Recreation Management*



Dr. Zigmont received her Ph.D. from The Ohio State University in Public Health (Concentration in Epidemiology and Minor in Biostatistics). She specializes in chronic disease prevention, epidemiologic methods, and food insecurity.



**Center for Intelligence
and Security Studies**

Center for

Intelligence and Security Studies

CRAIG MORRIS

Center for Intelligence and Security Studies

Instructional Associate Professor



Dr. Morris received his Ph.D. from Auburn University. He specializes in the history of technology, with a focus on airpower and national security studies.

KEVIN RIEHLE

Center for Intelligence and Security Studies

Instructional Associate Professor



Dr. Riehle received his Ph.D. from King's College London. He specializes in intelligence studies, with a focus on counterintelligence analysis and Russian intelligence services.

School of *Journalism and New Media*

AMANDA S. BRADSHAW

Integrated Marketing Communications

Assistant Professor of Integrated Marketing Communications



Dr. Bradshaw received her Ph.D. from the University of Florida. Her research focuses on the nexus of social media interactions and maternal health decision making, specifically in terms of childhood vaccine history.

ISAAC BRUNNER

Integrated Marketing Communications

*Instructional Assistant Professor of Social Media
and Data Analytics*



Dr. Brunner received his Ph.D. from Bowling Green State University. He specializes in social media, data analytics, and influencer marketing.



The Creed *of* The University of Mississippi

The University of Mississippi is a community of learning dedicated to nurturing excellence in intellectual inquiry and personal character in an open and diverse environment. As a voluntary member of this community:

I believe in respect for the dignity of each person.

I believe in fairness and civility.

I believe in personal and professional integrity.

I believe in academic honesty.

I believe in academic freedom.

I believe in good stewardship of our resources.

I pledge to uphold these values and encourage others to follow my example.