



NEW FACULTY GUIDE

THE UNIVERSITY OF MISSISSIPPI

2023

The Grove

From the Chancellor

Welcome as the newest member of the talented and dedicated faculty at the University of Mississippi. From our humble beginnings 175 years ago with four faculty members, our faculty has always delivered the exceptional learning experience that our students need to lead fulfilling lives and build legacies of purpose.

As a public flagship university, we're committed to helping you grow as an educator, scholar, researcher, creator, and community member. I'm confident you will discover that our supportive and vibrant work environment promotes success and advances our national profile in academics and research.

We're excited that you're here, and we can't wait to witness how you will have an impact on our students, our institution, and the world around us.

Sincerely,



Glenn F. Boyce, Chancellor



GLENN F. BOYCE

From the Provost

Welcome to the University of Mississippi. We are glad that you are joining our vibrant community of scholars that is committed to educating and serving the citizens of our state, nation, and world. The work you do here will be incredibly meaningful. Quite simply, it changes lives.

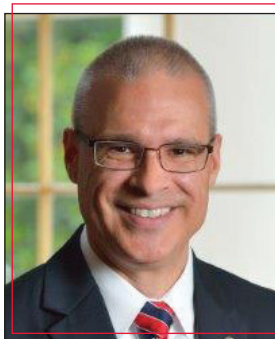
We are dedicated to fostering an atmosphere that unleashes your creativity. The University of Mississippi is a better place when you succeed. We are committed to nurturing a culture that respects the dignity of every person. This is fundamental to our community's values and is critical to fairness, civility, integrity, academic honesty, and academic freedom. We hope that our commitment to these values will benefit you as much as it does us.

We are glad you are here and look forward to the great things you will accomplish as members of our community as we pursue our mission to educate, discover, create, and serve.

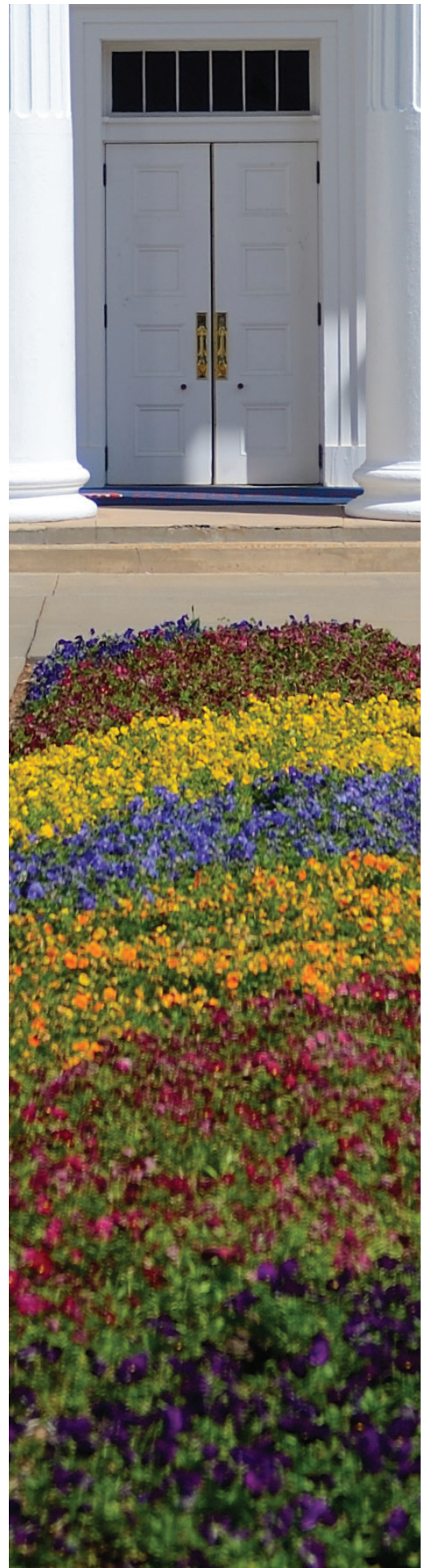
Sincerely,



Noel E. Wilkin, Provost



NOEL E. WILKIN

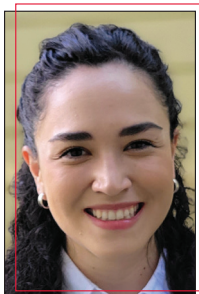


COLLEGE OF LIBERAL ARTS

IVONNE AYALA

Writing and Rhetoric

Instructor of Writing and Rhetoric

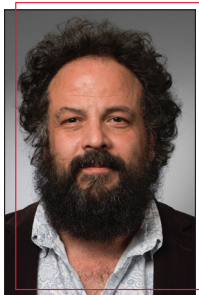


Ms. Ayala received her MFA and MA from the University of Alabama. She specializes in first-year writing composition and rhetoric, poetry with Spanish translation, and teaching English as a second language.

SCOTT MARTIN BARRETTA

Sociology and Anthropology

Instructor of Sociology and Anthropology



Mr. Barretta received his MA from the University of Virginia. He specializes in topics related to the blues including the revival process and cultural tourism.

ELIZABETH BAXTER

Classics

Instructional Assistant Professor

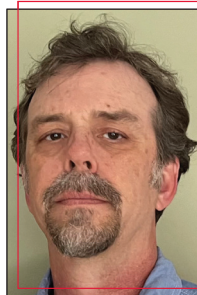


Dr. Baxter received her PhD from Boston University. She specializes in Archaic Greek lyric poetry.

HARRY D. BYNUM, JR.

Writing and Rhetoric

Instructor of Writing and Rhetoric

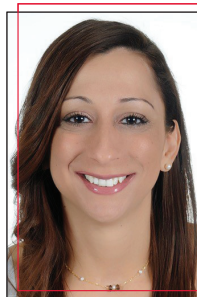


Dr. Bynum received his PhD from the University of Mississippi. He specializes in environmental writing, creative nonfiction, and 19th-century American literature.

CHRISTIANA CHRISTODOULOU

Modern Languages

Research Assistant Professor of Linguistics



Dr. Christodoulou received her PhD from the University of British Columbia. She specializes in psycholinguistics and neurolinguistics, interface analyses across morphosyntactic and phonetic/phonological phenomena, as well as theoretical approaches to (morpho) syntactic issues.

KESICIA DICKINSON

Political Science

Assistant Professor of Ethnic Politics



Dr. Dickinson received her PhD from Michigan State University. She specializes in American politics and political behavior with a focus on race, ethnicity, and gender politics.

LAURA DRISLANE

Psychology

Assistant Professor of Clinical Psychology



Dr. Drislane received her PhD from Florida State University. She specializes in clinical psychology, in particular impulse control disorders and their intersection with the criminal justice system.

AARON GRAHAM

Philosophy and Religion

Assistant Professor of Philosophy



Dr. Graham received his PhD from the University of Chicago. He specializes in the philosophy of law.

SHARDAY EWELL

Biology

Assistant Professor of Inclusive STEM Pedagogy



Dr. Ewell received her PhD from the University of Alabama at Birmingham. She specializes in biology education research.

ARMEE HONG

Music

Instructor of Music



Dr. Hong received her Doctor of Music from Indiana University, Jacobs School of Music. She specializes in violin performance and literature.

PHILLIP GORDON

Sarah Isom Center for Women and Gender Studies

Visiting Assistant Professor of Gender Studies

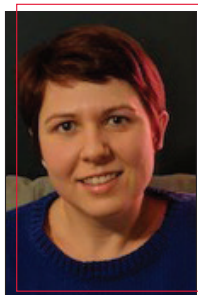


Dr. Gordon received his PhD from the University of Mississippi. He specializes in 20th and 21st-century American Literature and LGBTQ+ Studies.

SARAH HUDDLESTON

Writing and Rhetoric

Instructor of Composition and Rhetoric



Dr. Huddleston received her PhD from the University of Mississippi. She specializes in fiction and nonfiction writing.

XUEMING HUI

Mathematics

Visiting Assistant Professor of Mathematics



Dr. Hui received his PhD from Brigham Young University. He specializes in low-dimensional topology and dynamical systems.

JISEONG KIM

Mathematics

Visiting Assistant Professor of Mathematics



Dr. Kim received his PhD from the University at Buffalo. He specializes in the field of automorphic forms and analytic number theory.

JULI JACKSON

Theatre & Film

Visiting Assistant Professor of Film Production



Ms. Jackson received their MFA from Temple University. They specialize in screenwriting, directing, and experimental film and animation production techniques.

YOOJUNG KIM

Music

Instructor of Music



Dr. Kim received her Doctor of Musical Arts from Michigan State University. She specializes in piano and collaborative piano performance.

TAMARA KARAKOZOVA

Modern Languages

Instructional Assistant Professor of Russian



Dr. Karakozova received her PhD from the University of Mississippi. She specializes in language methodology.

AMBER KING

Writing and Rhetoric

Instructor of Composition and Rhetoric

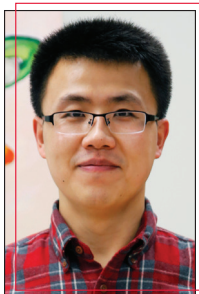


Ms. King received her MA from the University of Alabama. She specializes in composition and rhetoric.

PENGHAO LI

Chemistry and Biochemistry

Assistant Professor of Organic Chemistry



Dr. Li received his PhD from the University of Oregon. He specializes in organic, supramolecular, and materials chemistry.

NICHOLAS MACDONALD

Physics and Astronomy

Assistant Professor of Astrophysics

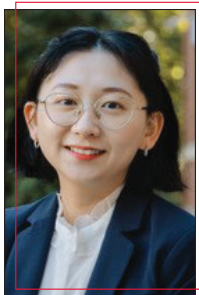


Dr. MacDonald received his PhD from Boston University. He specializes in the study of plasma physics (and radio emission) from relativistic black hole jets.

YIYAO LUO

Economics

Visiting Assistant Professor of Economics



Dr. Luo received her PhD from the University of North Carolina at Chapel Hill. She specializes in econometrics and financial econometrics.

MICHELLE BELK MATTHEWS

Economics

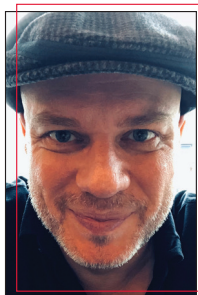
Visiting Associate Professor of Economics

Dr. Matthews received her PhD from the University of Mississippi. Her areas of interest are applied managerial economics, interest group theory, and public choice.

BRYAN MCADAMS

Theatre & Film

Instructional Assistant Professor of Musical Theatre



Mr. McAdams received his BM from the Berklee College of Music. He specializes in the interpretation and performance of contemporary musical theatre.

LYDIA LYTAL

Biology

Instructional Assistant Professor of Biology



Dr. Lytal received her PhD from the University of Mississippi. She specializes in science teacher support and professional development.

HOPE MENZEL

Mathematics

Instructor of Mathematics



Ms. Menzel received her MS from Mississippi State University. She specializes in developmental and first-year mathematics.

ERICA O'BRIEN

Psychology

Assistant Professor of Developmental Psychology



Dr. O'Brien received her PhD from North Carolina State University. She has expertise in lifespan developmental psychology, specifically in the experiences, processes, and outcomes associated with healthy aging.

TIMOTHY MENZEL

Biology

Instructional Assistant Professor

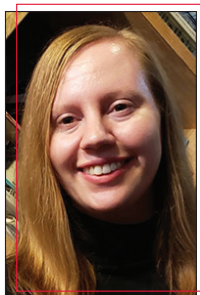


Dr. Menzel received his PhD from Mississippi State University. He specializes in the ecology of insects.

KELLENE O'HARA

Writing and Rhetoric

Instructor of Writing and Rhetoric



Ms. O'Hara received her MFA from The New School. She specializes in creative writing and first-year composition.

KENNETH ALARCÓN NEGY

History and Croft

Croft Visiting Assistant Professor of International Studies



Dr. Negy received his PhD from the University of North Carolina at Chapel Hill. He specializes in modern Spain and Germany, with a particular focus on transnational fascism.

TIMOTHY OLIVER

Music

Professor of Music and Director of Bands

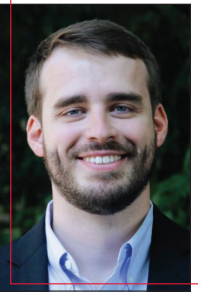


Dr. Oliver received his PhD from Florida State University. He specializes in conducting pedagogy, wind band repertoire, aesthetic distance, and servant leadership.

MATTHEW O'NEAL

History and Southern Studies

Visiting Assistant Professor of History and Southern Studies



Dr. O'Neal received his PhD from the University of Georgia. He specializes in labor, race, and migration in the late 19th- and 20th-century South.

RICHARD PURCELL

English and African American Studies

McAlexander Chair of English in African American Literatures and Cultures and Associate Professor of English

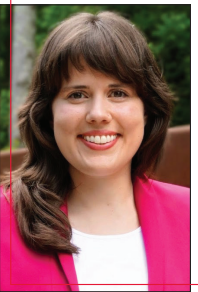


Dr. Purcell received his PhD from the University of Pittsburgh. He specializes in contemporary Black literature and media studies.

MARIEL PFEIFER

Biology

Assistant Professor of Inclusive STEM Pedagogy



Dr. Pfeifer received her PhD from the University of Georgia. She specializes in qualitative research methods and studies the experiences of STEM students with disabilities.

JUSTIN RADEN

English

Instructor of English



Dr. Raden received his PhD from the University of Illinois at Chicago. He specializes in late 19th- and 20th-century Anglophone literature, media theory, and critical theory.

REBECCA PRESCOTT

Biology

Assistant Professor of Bacteriology



Dr. Prescott received her PhD from the University of Hawai'i at Mānoa. She specializes in bacterial interactions through quorum sensing in natural systems.

JOHN FINLEY RASH

Theatre & Film and Southern Studies

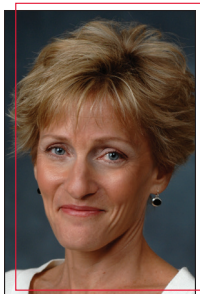
Assistant Professor of Southern Studies and Theatre



Mr. Rash received his MFA from Duke University. He specializes in documentary studies, film production, and avant-garde cinema.

JENNIFER ROBINSON

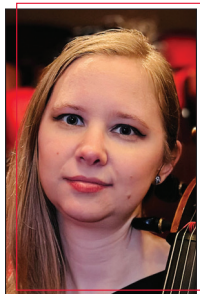
Music
Lecturer in Music



Ms. Robinson received her Master of Music degree from Florida State University. She specializes in applied studio voice and yoga for performers.

KELSEY SMITH

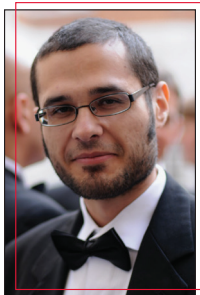
Music
Instructor of Music



Dr. Smith received her DA from the University of Northern Colorado. She specializes in cello performance.

ROHAN SHAH

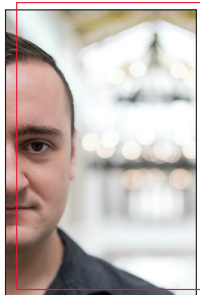
Economics
Assistant Professor of Macroeconomics



Dr. Shah received his PhD from The Ohio State University. His research focuses on the interplay between firms' decisions to invest in R&D or invest in physical capital and the implications this has for the aggregate economy, firm lifecycles, and recoveries from recessions.

PHILIP SNYDER

Music
Instructor of Music



Dr. Snyder received their DMA from the University of South Carolina. They specialize in flute performance and pedagogy, electronic music performance practice, experimental music, and the Japanese shakuhachi.

TERESA SIMONE

Theatre & Film
Instructional Assistant Professor of Theatre Studies



Dr. Simone received her PhD from Florida State University. She uses phenomenology and ecocriticism to study nationalist pageantry.

KALEENA STASIAK

Art and Art History
Assistant Professor of Printmaking



Ms. Stasiak received her MFA from the University of Georgia. She specializes in printmaking.

ANDREW R. STONE

Political Science

Assistant Professor of American Politics

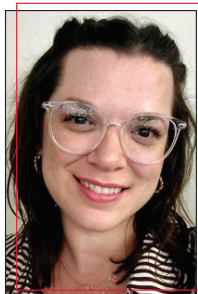


Dr. Stone received his PhD from Harvard University. He studies the relationship between the American public and political institutions, with a particular focus on the judiciary.

JENNIFER VENABLE

Gender Studies

Instructional Assistant Professor of Gender Studies



Dr. Venable received her PhD from Oregon State University. She specializes in intersectional feminist theory, critical whiteness studies, and southern feminisms.

ELODIE TANTET

Modern Languages

Instructional Assistant Professor of French



Dr. Tantet received her PhD from Washington University in St. Louis. She specializes in 18th-century French literature, performance, and spatial theory, as well as second language acquisition.

KRISTEN BATCHELOR WALKER

Modern Languages

Instructor of French



Mrs. Walker received her MA from The Ohio State University. She specializes in teaching beginning and intermediate intensive French language classes.

JESSE TUNE

Sociology and Anthropology

Associate Professor of Anthropology and Director of the Center for Archaeological Research



Dr. Tune received his PhD from Texas A&M University. He specializes in early hunter-gatherer archaeology and environmental change.

MICHAEL X. WANG

English

Assistant Professor of Creative Writing

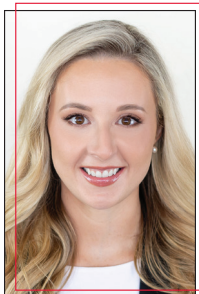


Dr. Wang received his PhD from Florida State University and his MFA from Purdue. He specializes in creative writing.

S. ELIZABETH MCGEE WILLIAMS

Writing and Rhetoric

Instructor of Writing and Rhetoric



Dr. Williams received her PhD from Middle Tennessee State University. She specializes in feminist rhetoric and writing program administration.

HARLEY ROGERS

Science Library

Science Librarian and Assistant Professor



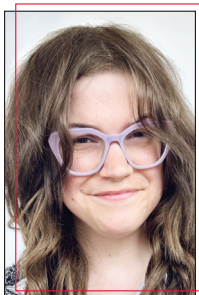
Ms. Rogers received her Master's of Information from Rutgers University. Her professional interests include intellectual freedom, advocacy, and expanding access to resources.



ELIZABETH BATTE

Administration

Outreach and Strategic Initiatives Librarian and Visiting Professor

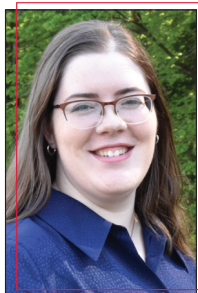


Ms. Batte received their MLIS from Louisiana State University and their BS from the University of Mississippi. They are currently a doctoral student of Higher Education Leadership at the University of Louisiana. Ms. Batte's area of specialization is in open educational resources and open access, library administration and organization, and parental policies in public higher education.

SHELBY WATSON

Scholar Support and Data Services

Visiting Assistant Professor for Scholar Support



Dr. Watson received her PhD from the University of Mississippi. Her interests include science education, spatial statistics, and mixed and quantitative methodologies in the social sciences.



JADE A. CRAIG

Visiting Assistant Professor of Law



Professor Craig received his JD from Columbia Law School. He specializes in fair housing law, real estate law, and race and law.

MARTIN EDWARDS

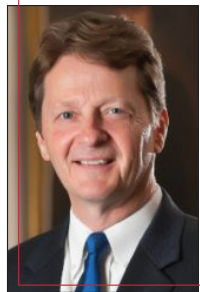
Assistant Professor of Law



Professor Edwards received his JD from the Duke University School of Law. He specializes in business and commercial law, as well as law and economics and law and technology.

FREDERICK G. SLABACH

Dean and Professor of Law



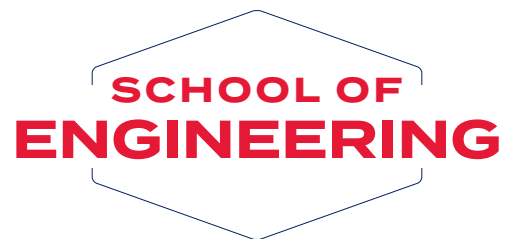
Dean Slabach received his LLM from Columbia University School of Law and his JD from the University of Mississippi School of Law. He specializes in Constitution law and has held several leadership roles including President of Texas Wesleyan University School of Law.

ALMAS KHAN

Assistant Professor of Law



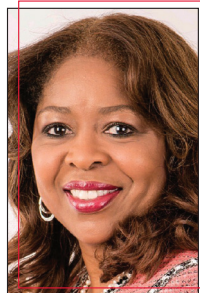
Dr. Khan received her PhD from the University of Virginia and her JD from the University of Chicago Law School. She specializes in race and the law, U.S. constitutional law, and critical legal history.



VIOLA L. ACOFF

School of Engineering

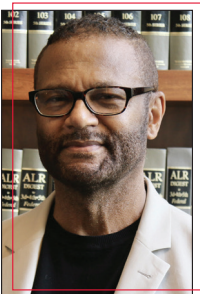
Dean and Professor of Mechanical Engineering



Dr. Acoff received her PhD from the University of Alabama at Birmingham. Her areas of expertise are additive manufacturing, welding metallurgy, and materials characterization. She also has over 25 years' experience in increasing the number of STEM degrees awarded to students from underrepresented groups.

CALVIN D. PEELER

Visiting Associate Professor of Law

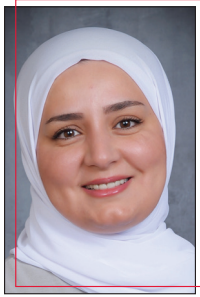


Professor Peeler received his BA, master's, and JD from the University of California, Berkeley. He also earned a master's and JSM from Stanford University. He specializes in contract law, California community property, personal finance, and world history.

OHOD ALSMAIRAT

Mechanical Engineering

Instructional Assistant Professor of Mechanical Engineering



Dr. Alsmairat received her PhD from the State University of New York at Binghamton. She specializes in the manufacturing and mechanical characterization of nanomaterials and electrospun reinforced polymer nanocomposites microfibers.

DAVID HARRISON

Computer and Information Science

Assistant Professor of Computer and Information Science



Dr. Harrison received his PhD from Rensselaer Polytechnic Institute. He specializes in machine learning, data science, and computer networks.

ALI BEHNOOD

Civil Engineering

Assistant Professor of Civil Engineering



Dr. Behnood received his PhD from Purdue University. He specializes in pavement engineering, transportation engineering, connected and automated systems, energy usage, sustainability, and artificial intelligence (AI) for the development of the next generation of sustainable and resilient infrastructures.

THOMAS OOMMEN

Geology and Geological Engineering

Chair and Professor of Geology and Geological Engineering



Dr. Oommen received his PhD from Tufts University. He obtained his MS from the University of Alaska/Fairbanks and his Bachelor of Engineering degree from Bangalore University. His research interests include geohazard risk assessment and critical infrastructure system monitoring.

BRADLEY GOODWILLER

General Engineering

Instructional Assistant Professor of General Engineering



Dr. Goodwiller received his PhD from the University of Mississippi. He specializes in underwater acoustic data collection and analysis.

HONG XIAO

Computer and Information Science

Assistant Professor of Computer and Information Science



Dr. Xiao received her PhD from Yale University. Her research interests include data science, machine learning, and general numerical algorithms and applications in physics and engineering.



ASHLEY BARROWS GORALCZYK

Teacher Education

Instructor of Teacher Education

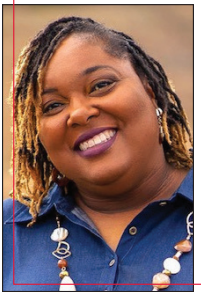


Dr. Goralczyk received her EdD from the University of Mississippi. She specializes in kindergarten readiness, early reading interventions, and the science of reading.

ERICA L. AVENT

Teacher Education

Assistant Professor of Elementary Education



Dr. Avent received her EdD from the University of Mississippi. She specializes in teacher preparation, equity, and mentorship.

LAUREN M. HILL

Teacher Education

Instructor of Health and Physical Education



Ms. Hill received her MEd from Arkansas State University. She specializes in physical activity, promoting a healthy lifestyle, and leadership.

WHITNEY W. DREWERY

Teacher Education

Clinical Instructor of Special Education

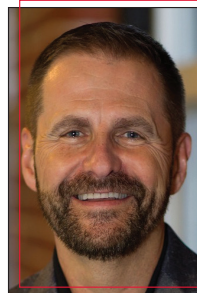


Ms. Drewery received her Education Specialist degree from William Carey University. She specializes in teaching students with intellectual disabilities and preparing pre-service teachers for the classroom.

EDWARD (FRANC) HUDSPETH

Leadership and Counselor Education

Clinical Associate Professor of Counselor Education

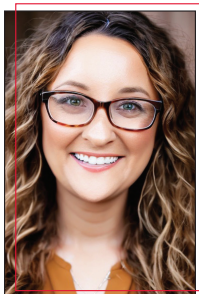


Dr. Hudspeth received his PhD from the University of Mississippi. He specializes in play therapy, opioid addiction, and substance abuse counseling, as well as military and government counseling.

KRISTINA LIVINGSTON

Teacher Education

Assistant Professor of Elementary Education



Dr. Livingston received her EdD from the University of Mississippi. She specializes in reading and language arts education.



YINAN HUANG

Pharmacy Administration

Assistant Professor of Pharmacy Administration and
Research Assistant Professor in the Research Institute of
Pharmaceutical Sciences



Dr. Huang received her PhD from the University of Houston. She specializes in pharmacoepidemiology, secondary database analysis, and evaluation of medication safety.

CANDIES WINFUN-COOK

Teacher Education

Clinical Assistant Professor of Teacher Education



Dr. Winfun-Cook received her EdD from the University of Mississippi. She specializes in mathematics education.

VIRENDER KUMAR

Pharmaceutics and Drug Delivery

Assistant Professor of Pharmaceutics and Drug Delivery
and Research Assistant Professor in the Research Institute
of Pharmaceutical Sciences



Dr. Kumar received his PhD from the University of Nebraska Medical Center. He specializes in drug delivery and pharmaceutics.

BRENTON LAING

BioMolecular Sciences

Assistant Professor of Pharmacology and Research
Assistant Professor in the Research Institute of
Pharmaceutical Sciences



Dr. Laing received his PhD from East Carolina University. He specializes in identifying how neuronal activity patterns relate to stimulus exposure, physiology, and behavior.

HAYLEY PRESCOTT

BioMolecular Sciences

Instructional Assistant Professor



Dr. Prescott received her PhD from the University of Mississippi. She specializes in herbal medicine and dietary supplements.

MOHAMMED MANIRUZZAMAN

Pharmaceutics and Drug Delivery

Chair and Professor of Pharmaceutics and Drug Delivery
and Research Professor in the Research Institute of
Pharmaceutical Sciences



Dr. Maniruzzaman received his PhD from the University of Greenwich, UK. He specializes in pharmaceutical process engineering, continuous manufacturing and 3D printing of medicines including biologics and mRNA therapeutics.

ROBERT WELCH

RIPS

Director of the National Center for Cannabis Research
and Education and Research Associate Professor in the
Research Institute of Pharmaceutical Sciences



Dr. Welch received his PharmD from the University of Mississippi. He specializes in cannabis research and education.

LINDSEY MILLER

Pharmacy Practice

Clinical Assistant Professor of Pharmacy Practice

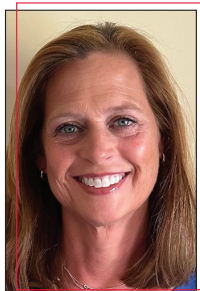


Dr. Miller received her PharmD from the University of Mississippi. She specializes in community pharmacy practice, advocacy, and advancement.

MARY YATES

Pharmacy Practice

Visiting Associate Professor of Pharmacy Practice

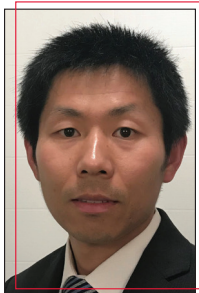


Dr. Yates received her PharmD from the University of Tennessee Health Center, College of Pharmacy. She specializes in medication use and safety and process improvement.

JOSHUA ZHU

BioMolecular Sciences

Assistant Professor of Medicinal Chemistry and
Research Assistant Professor in the Research Institute of
Pharmaceutical Sciences

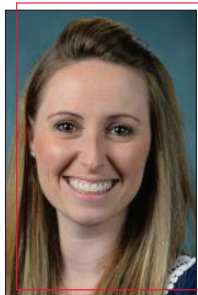


Dr. Zhu received his PhD from Georgia State University. He specializes in glycoscience.

RACHAEL DURHAM

Management

Adjunct Instructor



Ms. Durham will complete her EdD in Higher Education in August 2023. She is the Assistant Director for First-Year Experience at the University of Mississippi.



TRACION FLOOD

Management

Adjunct Instructor



Dr. Flood received her DBA from Walden University. She is Program Manager of African American Studies and the Prison-to-College Pipeline Program at the University of Mississippi.

KHASHAYAR (KASH) AFSHAR

Marketing, Analytics, and Professional Sales

Assistant Professor of Marketing



Dr. Afshar received his PhD from Iowa State University. His research resides in professional selling, sales management, and sales technology.

JENNIFER FOS

Management

Adjunct Instructor



Dr. Fos received her PhD from the University of Mississippi. She works in the Center for Student Success and First-Year Experience, where she specializes in student retention.

LIXIONG GUO

Finance

Assistant Professor of Finance



Dr. Guo received his PhD from Vanderbilt University. His primary area of research is in corporate finance.

DAVID MATHIS

Marketing, Analytics, and Professional Sales

Assistant Professor of Marketing

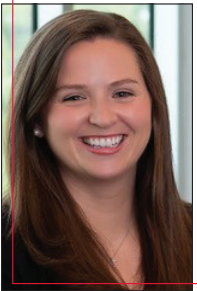


Dr. Mathis received his PhD from the University of Alabama. His research interests are digital marketing, online shopping behaviors, and the impact of online shopping on offline shopping.

MORGAN HART

Management

Adjunct Instructor



Ms. Hart received her JD from the University of Mississippi.

ROBERT (LOU) MCPHAIL

Management

Instructional Assistant Professor of Management and Business Law



Mr. McPhail received his JD from the University of North Dakota. His interests lie in business law.

SAI KE

Finance

Visiting Assistant Professor of Finance



Dr. Ke received his PhD from the University of Houston. His primary research interests are in empirical asset pricing, specifically financial derivatives.

JOYCE NABISAALU

Management

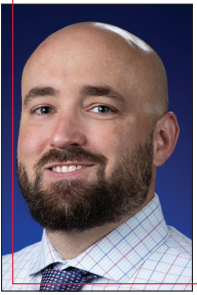
Visiting Assistant Professor of Management



Dr. Nabisaalu received her PhD from Oklahoma State University. Her research interests lie at the intersection of entrepreneurship, strategy, and family business.

NICHOLAS SULLIVAN

Marketing, Analytics, and Professional Sales
Assistant Professor of MIS



Dr. Sullivan received his PhD from the University of Utah. His research interests include applying deep learning methods to solve business problems.

SEONG WON YANG

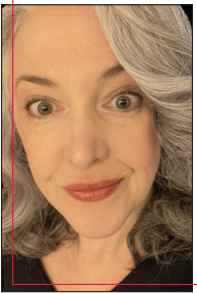
Management
Assistant Professor of Management



Dr. Yang received his PhD from the University of Kentucky. His research interests are interpersonal social networks in organizations.

JENNIFER WILLIAMS

Management
Adjunct Instructor

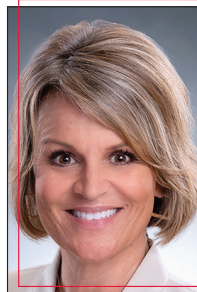


Ms. Williams received her Master of Accountancy from Western Carolina University. She specializes in financial services and financial reporting in the banking sector.



LACEY GENTRY

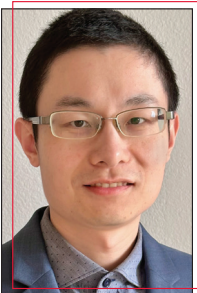
Nursing
Assistant Professor/Director of Oxford Instructional Site



Ms. Gentry received her BSN and MSN degrees from Mississippi University for Women. She will complete her DNP in Nursing Administration with a Nurse Educator concentration in April 2024.

DA XU

Marketing, Analytics, and Professional Sales
Assistant Professor of MIS



Dr. Xu received his PhD from the University of Utah. His research interests include predictive analytics, health informatics, online digital platforms, deep learning, and data mining for business intelligence.

LACY HESTER

Nursing
Instructor



Mrs. Hester received her associate degree from Itawamba Community College. She received her Bachelor of Science from Chamberlain University and Master of Science from the University of North Alabama.

PATTERSON SCHOOL OF ACCOUNTANCY

MARY KATHERINE (GRAHAM) JONES

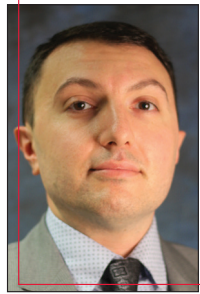
Instructor of Accountancy



Ms. Jones received both her Bachelor of Accountancy and Master of Taxation degrees from the University of Mississippi. She is a Certified Public Accountant.

GIORGI KHATIASHVILI

Instructional Assistant Professor/Barksdale Fellow



Dr. Khatiashvili received his doctorate and master's degrees from the University of Mississippi. He also holds a master's degree from Augusta University and master's and bachelor's degrees from Tbilisi State University. He specializes in international forum shopping.

SCHOOL OF APPLIED SCIENCES

SALLY MCDONNELL BARKSDALE HONORS COLLEGE

ROBERT CORBAN

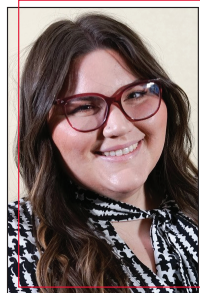
Instructional Assistant Professor/Barksdale Fellow

Mr. Corban received his master's degrees from Syracuse University and Columbia University. He received his bachelor's degrees from the University of Mississippi. He is a doctoral candidate at Columbia University, where he specializes in the economic, political, and environmental histories of Italy, Europe, and the Mediterranean.

KATHARINE L. BROWN

Criminal Justice and Legal Studies

Assistant Professor of Criminal Justice and Legal Studies

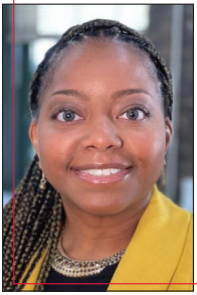


Dr. Brown received her PhD from Arizona State University. She specializes in policing and homelessness.

CHERYL FERGERTSON

Social Work

Instructional Assistant Professor of Social Work



Dr. Fergertson received her bachelor's and master's degrees from the University of Memphis. She also earned her DSW from Capella University. She specializes in child welfare, pediatric medical social work, and neurodiverse populations.

ROUN S. MCNEAL

Criminal Justice and Legal Studies

Instructional Assistant Professor of Criminal Justice and Legal Studies



Mr. McNeal received his BA and JD from the University of Mississippi. He represented George, Greene, and Perry Counties in the Mississippi House of Representatives from 2016-2020.

DEE M. LANCE

Communication Sciences and Disorders

Chair and Professor of Communication Sciences and Disorders

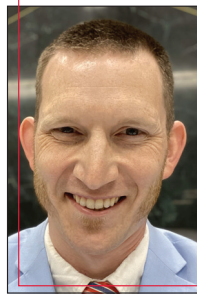


Dr. Lance received her PhD from the University of Tennessee, Knoxville. She has published and presented in reading difficulties in children with language disorders.

JUSTIN C. MOODY

Criminal Justice and Legal Studies

Instructional Assistant Professor of Criminal Justice and Legal Studies



Professor Moody received his JD from the University of Mississippi. He specializes in the various rules of procedure, judicial ethics, and jurisprudence.

JONG EUN LEE

Health, Exercise Science, and Recreation Management

Instructional Assistant Professor of Sport and Recreation Administration/Sport Analytics



Dr. Lee received his PhD from Washington State University. He specializes in sport management, data analytics, as well as student development and retention.

ANDRE G. SIMMOND

Health, Exercise Science, and Recreation Management

Instructor of Sport and Recreation Administration

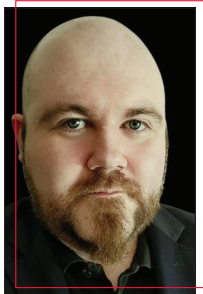


Mr. Simmond received his MS from the University of Mississippi. His research interests include sport for development and organizational behavior.

THOMAS BRYAN SMITH

Criminal Justice and Legal Studies

Assistant Professor of Criminal Justice and Legal Studies

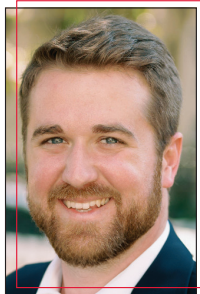


Dr. Smith received his PhD from the University of Florida. He specializes in machine learning and network science applications in criminal justice.

LOGAN KIRKLAND

Journalism

Adjunct Instructor of Journalism



Mr. Kirkland received both his MA and BA from the University of Mississippi. He is currently pursuing his MFA through the Center for the Study of Southern Culture. He specializes in visual storytelling, primarily through photography and film.



SUMMER HILL-VINSON

Journalism

Instructional Assistant Professor



Dr. Hill-Vinson received her PhD from the University of Missouri and both a BA and MA from the University of Mississippi. Her research area is media history during the civil rights movement.

ITZHAK MASHIAH

Integrated Marketing Communications

Visiting Assistant Professor of Integrated Marketing Communications



Mr. Mashiah is a PhD candidate at the University of Haifa. He specializes in tech rhetoric and media strategies to promote tech storytelling.

The Creed *of* **The University of Mississippi**

The University of Mississippi is a community of learning dedicated to nurturing excellence in intellectual inquiry and personal character in an open and diverse environment. As a voluntary member of this community:

I believe in respect for the dignity of each person.

I believe in fairness and civility.

I believe in personal and professional integrity.

I believe in academic honesty.

I believe in academic freedom.

I believe in good stewardship of our resources.

I pledge to uphold these values and encourage others to follow my example.

